

Rigid/Intermediate Grade Conduit Fittings

Mogul Pulling Elbows

MOGUL PULLING ELBOWS - DIE CAST COPPER-FREE ALUMINUM

Applications:

- Used as a chamber for containing heavy-duty conductors
- For use as a chamber for containing a 90° turn in large stiff conductors to change conductor direction or to enter buildings
- For use as a pull box for pulling large conductors
- For use as a chamber for making splices and taps
- Can be used as an accessible opening to accommodate future changes of the system

Features & Benefits:

- Large dome cover permits easy, straight through pull
- Dimension from center-line of back hub to bushing of end hub exceeds six times the trade diameter of the conduit
- Tapered threads provide easy assembly, tight construction
- Heavy-duty machine screws for cover
- Cover gasket provides long dependable service and protection against the elements; such as fuel, oil and water
- Smooth design and finish make handling easy and complement any construction job
- Body and Cover: Die-cast copper-free aluminum
- Gasket—Fuel, oil, and water resistant flex seal

Certifications & Compliances:

- UL Standard: 514A
- NEC: Article 314
- CSA C22.2 No. 18
- CEC: 22.1

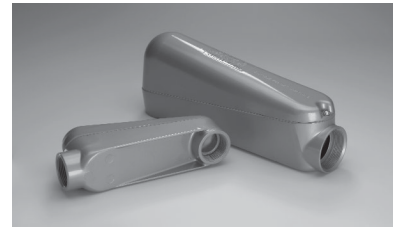
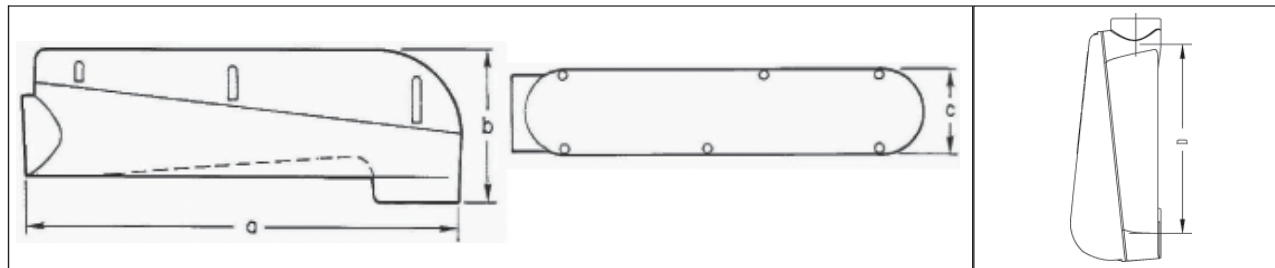
Standard Finishes:

- Corrosion-resistant metallic paint

Ordering Information

Catalog No.	Size	Dimensions				Max Wire Size	Unit Qty.	Wt. Lbs Per 100
		A	B	C	D			
LBNEC3	1"	9 ²¹ / ₃₂ "	3 ¹⁷ / ₃₂ "	2 ¹ / ₂ "	7 ¹ / ₂ "	2 AWG	2	146
LBNEC4	1 ¹ / ₄ "	9 ²¹ / ₃₂ "	3 ¹⁷ / ₃₂ "	2 ¹ / ₂ "	7 ¹ / ₂ "	2 AWG	2	132
LBNEC5	1 ¹ / ₂ "	14 ¹⁷ / ₃₂ "	5 ¹³ / ₃₂ "	3 ³ / ₈ "	12 ¹ / ₂₀ "	250 kcmil	1	258
LBNEC6	2"	14 ¹⁷ / ₃₂ "	5 ¹³ / ₃₂ "	3 ³ / ₈ "	12 ¹ / ₂₀ "	250 kcmil	1	230
LBNEC7	2 ¹ / ₂ "	22"	7 ¹⁷ / ₃₂ "	4 ¹ / ₂ "	18 ⁵ / ₃₂ "	500 kcmil	1	1003
LBNEC8	3"	22"	7 ¹⁷ / ₃₂ "	4 ¹ / ₂ "	18 ⁵ / ₃₂ "	500 kcmil	1	938
LBNEC9	3 ¹ / ₂ "	28 ²⁷ / ₃₂ "	8 ⁹ / ₁₆ "	5 ¹ / ₂ "	24 ¹ / ₈ "	900 kcmil	1	2158
LBNEC10	4"	28 ²⁷ / ₃₂ "	8 ⁹ / ₁₆ "	5 ¹ / ₂ "	24 ¹ / ₈ "	900 kcmil	1	2060

Dimensions



Eaton's Crouse-Hinds mogul pulling elbows facilitate wire pulling in 90° bends to allow changes in conductor direction. The pulling elbows can also be used to allow conductor entrance into buildings. With the smooth finish and large dome cover, wires can be easily pulled through without compromising the wire insulation. The gasketed cover creates a raintight chamber and the copper-free aluminum construction provides increased corrosion resistance, making the mogul pulling elbow ideal for any outdoor application.

CP